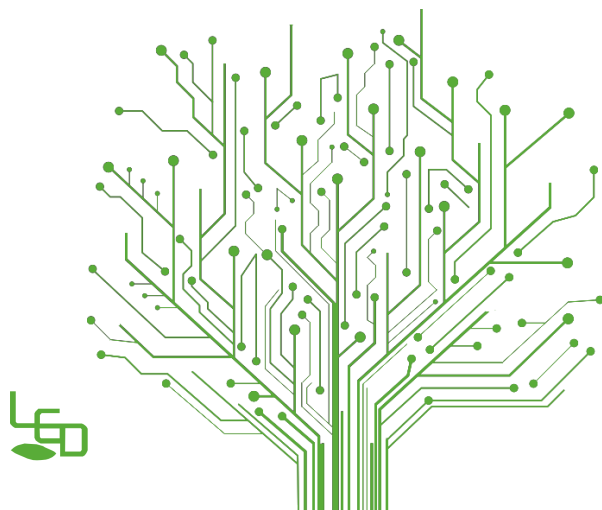


www.fbtradinginnovation.it
Cell. 379 15 31 345



WE CARE
ABOUT
YOUR CONCERNS



COMPANY PROFILE

Shenzhen Jie Yu Industrial Co., Ltd. (known as JYVISIONS) was found in 2012 as an integrated LED display solution provider. We are dedicated to offering quality, custom, affordable and durable products to customers worldwide. Located in Shenzhen, China where is the frontier of global LED display technology and manufacturing, we are committed to introducing the cutting-edge technology and cutting-edge products to our partners and customers.

JYVISIONS people are driven by excellence and responsibility. Our management team for R&D, production, sales, service and service support all involved in LED display for more than a decade. Workers are well trained before go to duty.

JYVISIONS production equipment is driven by high precision and high reliability. The manufacturing facility is upgrading continuously. We are trying the best to reduce human working during production to minimize human errors.

With a monthly production capability of 400 million LEDs, JYVISIONS is producing LED displays for audio visual partners, media advertising partners, event organizers and planners, etc.

To provide reliable and green products powered by LED technology is JYVISIONS mission. We are always on the way to keep pursuing a better technology, a better partnership and a better solution.





COMMERCIAL SCREENS



SPORTS SCREENS



EVENT SCREENS



CREATIVE SCREENS

CLASSIC APPLICATIONS

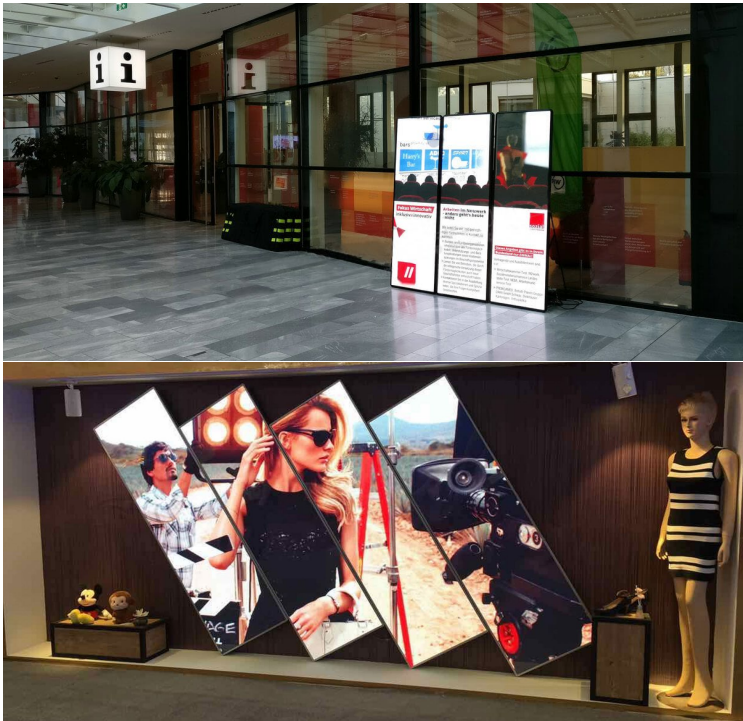


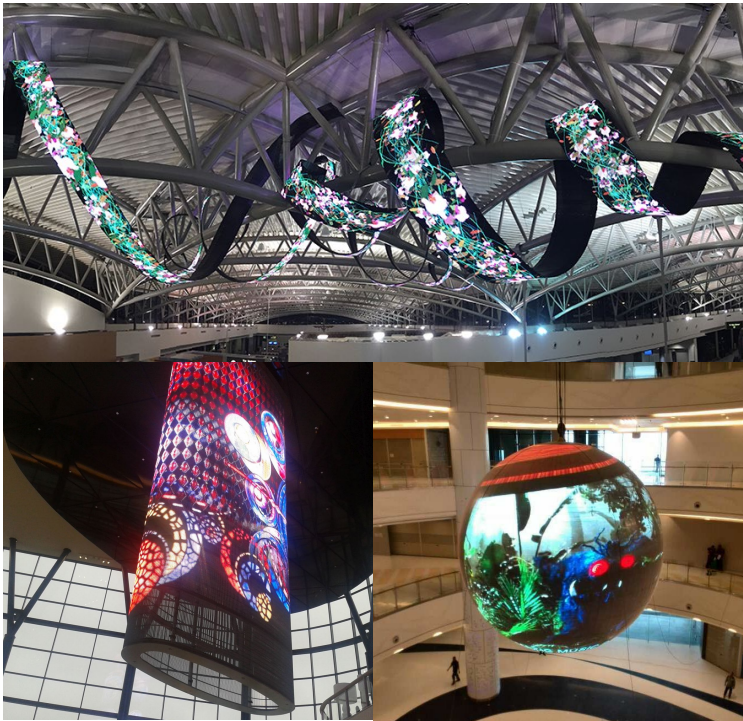
COMMERCIAL APPLICATIONS



SPORTS APPLICATIONS







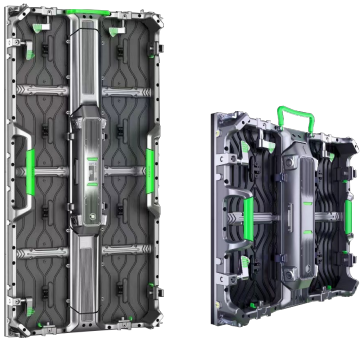


EVENT RETNAL SERIES

X Plus series

Features:

- Modular design, product consist of 3 main parts, frame/module/PDU
- Board to board connections without cables
- Front&Rear maintenance, module and PDU can pass through the frame
- Same modules on each cabinet, no need to have AB modules
- Cabinet support different pixel pitches, can make concave and convex installation
- With corner protection, reduce damage while build up the screen



Born for
Events

X Plus Series



Technical Parameter

Model	XP2.9	XP3.9
SMD	SMD2020	SMD2020
Pixel Pitch	2.97mm	3.91mm
Module size	250 x 250mm	250 x 250mm
Pixel Density	112,896pixels/m ²	65,536pixels/m ²
Cabinet size	500 x 500mm	500 x 500mm
Cabinet weight	7.5Kg	7.5Kg
Refresh rate	3840Hz	3840Hz
Driver method	28S	16S
Brightness	900nits	1000nits
Viewing angle	160/160	160/160
Max. power	640W/m ²	640W/m ²
Avg. power	200w/m ²	200w/m ²
Protection rate	IP31	IP31
Service type	Front/Rear	Front/Rear





SPORTS SERIES

STP series

Features:

- High refresh rate up to 3840Hz
- Soft mask and top protection cap to protect players
- Energy green, lower than 480w max per sqm, with an avg. 200w/sqm
- Adjustable foot help your screen stand firm and available in few different angles
- Light in weight



Sport Series

Technical Parameter

Model	STP8	STP10
SMD	SMD3535	SMD3535
Pixel Pitch	8mm	10mm
Module size	320 x 160mm	320 x 160mm
Pixel Density	15,625pixels/m ²	10,000pixels/m ²
Cabinet size	1280 x 960mm	1280 x 960mm
Cabinet weight	80Kg	80Kg
Refresh rate	3840Hz	3840Hz
Driver method	5S	2S
Brightness	5500nits	5500nits
Viewing angle	160/160	160/160
Max. power	480W/m ²	480W/m ²
Avg. power	200w/m ²	200w/m ²
Protection rate	IP65	IP65
Service type	Rear	Rear



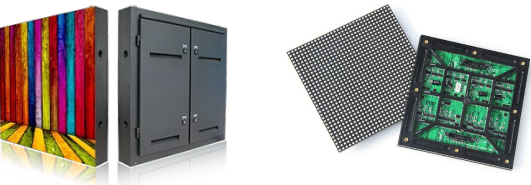


COMMERCIAL APPLICATION

CFO series

Features:

- High refresh rate up to 3840Hz
- Deep black mask results in high contrast ratio
- Energy green, lower than 480w max per sqm, with an avg. 200w/sqm
- Total front service, perfect for wall mounting
- Super stable and heat dissipation
- CE version available



Commercial Series



Technical Parameter

Model	CFO3	CFO4	CFO5	CFO10
SMD	SMD1921	1921	SMD2727	SMD3535
Pixel Pitch	3mm	4mm	8mm	10mm
Module size	192 x 192mm	256 x 128mm	320 x 160mm	320 x 320mm
Pixel Density	111,111pixels/m ²	62,500pixels/m ²	40,000pixels/m ²	10,000pixels/m ²
Cabinet size	768 x 768mm	1024 x 768mm	960 x 960mm	960 x 960mm
Cabinet weight	26Kg	32Kg	36Kg	36Kg
Refresh rate	1920Hz	1920Hz	1920Hz	1920Hz
Driver method	16S	8S	8S	2S
Brightness	5500nits	6000nits	5500nits	600nits
Viewing angle	160/160	160/160	160/160	160/160
Max. power	780W/m ²	750W/m ²	750W/m ²	480W/m ²
Avg. power	400w/m ²	245w/m ²	245w/m ²	200w/m ²
Protection rate	IP65	IP65	IP65	IP65
Service type	Rear	Rear	Rear/Front	Rear/Front



Diamond series

Features:

- Super slim aluminum profile frame chassis
- Die casting aluminum housing
- High brightness up to 10000nits
- Curve splicing for 3D effects available
- Eco efficiency on power consumption



Commercial Series



Technical Parameter

Model	JVV-DO3	CFO4	CFO5	CFO10
SMD	SMD1921	1921	SMD2727	SMD3535
Pixel Pitch	3mm	4mm	8mm	10mm
Module size	192 x 192mm	256 x 128mm	320 x 160mm	320 x 320mm
Pixel Density	111,111pixels/m ²	62,500pixels/m ²	40,000pixels/m ²	10,000pixels/m ²
Cabinet size	768 x 768mm	1024 x 768mm	960 x 960mm	960 x 960mm
Cabinet weight	26Kg	32Kg	36Kg	36Kg
Refresh rate	1920Hz	1920Hz	1920Hz	1920Hz
Driver method	16S	8S	8S	2S
Brightness	5500nits	6000nits	5500nits	600nits
Viewing angle	160/160	160/160	160/160	160/160
Max. power	780W/m ²	750W/m ²	750W/m ²	480W/m ²
Avg. power	400w/m ²	245w/m ²	245w/m ²	200w/m ²
Protection rate	IP65	IP65	IP65	IP65
Service type	Rear	Rear	Rear/Front	Rear/Front





INDOOR APPLICATION

IEC series

Features:

- High refresh rate and high contrast ratio
- Light weight, easy installation
- Die-cast aluminum cabinet with perfect alignment and accuracy
- Total front service, space saving & easy maintenance
- Two size options, 640x640mm / 640 x 480mm, a step closer to your target screen size



IEC Series

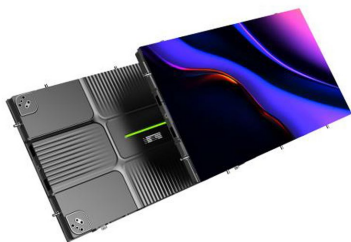
Technical Parameter

Model	IEC1.2	IEC1.5	IEC1.8	IEC2.5
SMD	SMD1010	SMD1010	SMD1515	SMD1515
Pixel Pitch	1.25mm	1.53mm	1.86mm	2.5mm
Module size	320 x 160mm	320 x 160mm	320 x 160mm	320 x 160mm
Pixel Density	640,000pixels/m ²	423,801pixels/m ²	289,444pixels/m ²	160,000pixels/m ²
Cabinet size	640*640mm	640*640mm	640*640mm	640*640mm
Cabinet weight	9.5Kg	9.5Kg	9.5Kg	9.5Kg
Refresh rate	3840Hz	3840Hz	3840Hz	3840Hz
Driver method	64S	43S	43S	32S
Brightness	500nits	500nits	600nits	700nits
Viewing angle	160/160	160/160	160/160	160/160
Max. power	500W/m ²	550W/m ²	550W/m ²	550W/m ²
Avg. power	150w/m ²	165w/m ²	165w/m ²	165w/m ²
Protection rate	IP31	IP31	IP31	IP31
Service type	Front	Front	Front	Front

DC series

Features:

- 16:9 golden aspect ratio, easy to splice to pixel to pixel 2K, 4K, 8K LED walls
- Super slim to 32mm, installation site space saving
- Stunning visual performance, high reliability and easy installation
- Full front access maintenance



DC Series

Technical Parameter

Model	DC0.9	DC1.2	DC1.5	DC1.8
SMD	SMD4 IN 1	SMD1010	SMD1515	SMD1515
Pixel Pitch	0.9375mm	1.25mm	1.56mm	1.87mm
Module size	320*168.75mm	320*168.75mm	320*168.75mm	320*168.75mm
Pixel Density	1,137,777pixels/m ²	640,000pixels/m ²	409,600pixels/m ²	284,444pixels/m ²
Cabinet size	600*337.5mm	600*337.5mm	600*337.5mm	600*337.5mm
Cabinet weight	6.2Kg	6.2Kg	6.2Kg	6.2Kg
Refresh rate	3840Hz	3840Hz	3840Hz	3840Hz
Brightness	450nits	500nits	600nits	600nits
Viewing angle	160/160	160/160	160/160	160/160
Max. power	450W/m ²	500W/m ²	500W/m ²	500W/m ²
Avg. power	125w/m ²	150w/m ²	150w/m ²	150w/m ²
Protection rate	IP31	IP31	IP31	IP31
Service type	Front	Front	Front	Front



CFI series

Features:

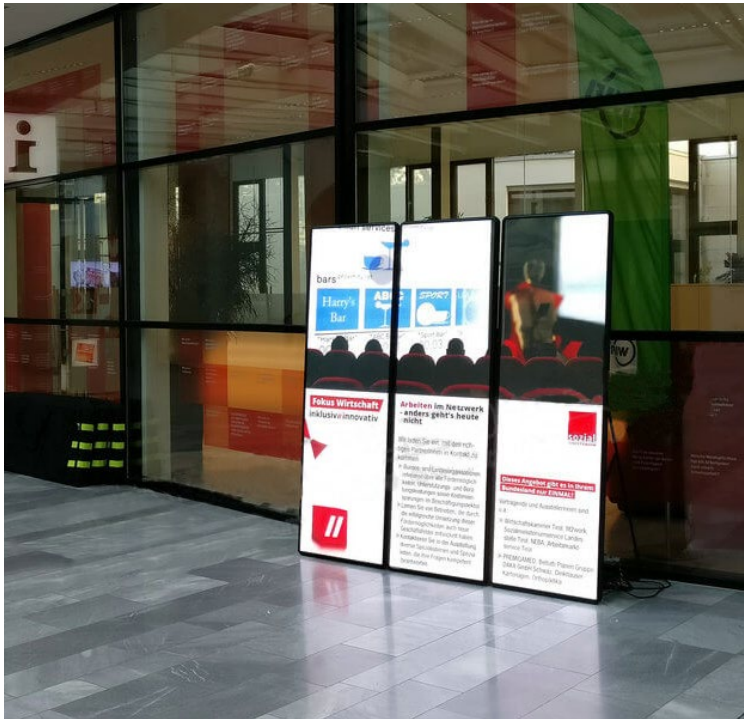
- High refresh rate up to 3840Hz
- Deep black mask results in high contrast ratio
- Superb grayscale for indoor applications
- Rear or front service
- Super stable and heat dissipation
- CE version available

CFI Series

Technical Parameter

Model	F12	F13	F14	F15
SMD	SMD2020	SMD2020	SMD2020	SMD2020
Pixel Pitch	2.5mm	3mm	4mm	5mm
Module size	160 x 160mm	192 x 192mm	256 x 128mm	320 x 160mm
Pixel Density	160,000pixels/m ²	110,889pixels/m ²	62,500pixels/m ²	40,000pixels/m ²
Cabinet size	480 x 480mm	768 x 768mm	768 x 768mm	960 x 960mm
Cabinet weight	8Kg	23Kg	23Kg	35Kg
Refresh rate	1920Hz	1920Hz	1920Hz	1920Hz
Driver method	32S	32S	16S	16S
Brightness	1000nits	1000nits	1000nits	1000nits
Viewing angle	160/160	160/160	160/160	160/160
Max. power	700W/m ²	700W/m ²	700W/m ²	700W/m ²
Avg. power	250w/m ²	250w/m ²	250w/m ²	250w/m ²
Protection rate	IP31	IP31	IP31	IP31
Service type	Front	Front	Front	Front





SMART LED POSTER

AD series

Features:

- High refresh rate up to 3840Hz
- Deep black mask results in high contrast ratio
- Plug and play
- Flexible enough to build different combinations
- Publish content remotely



Advertising Poster

Technical Parameter

Model	AD1	AD2	AD3
SMD	SMD1415	SMD2020	SMD2020
Pixel Pitch	1.9mm	2.5mm	3mm
Module size	320 x 160mm	320 x 160mm	320 x 160mm
Pixel Density	275,625pixels/m ²	160,000pixels/m ²	110,890pixels/m ²
Display size	640 x 1920mm	640 x 1920mm	576 x 1920mm
Cabinet size	650 x 1940 x 50mm	650*1940*50mm	585*1940*50mm
Refresh rate	1920Hz	1920Hz	1920Hz
Driver method	32S	32S	32S
Brightness	1000nits	1000nits	1000nits
Viewing angle	160/160	160/160	160/160
Max. power	600W/set	700W/set	800W/set
Avg. power	250w/set	300w/set	300w/set
Protection rate	IP31	IP31	IP31
Service type	Rear/front	Rear/front	Rear/front





CIRCE SERIES

CIRCE series

Features:

- High refresh rate up to 3840Hz
- High contrast ratio
- Flexible enough to make different shapes
- Front service allowed



CIRCE Series

Technical Parameter

Model	C1.2	C1.8	C2.5
SMD	SMD1010	SMD1515	SMD1515
Pixel Pitch	1.25mm	1.86mm	2.5mm
Module size	240 x 120mm	320 x 160mm	320 x 160mm
Pixel Density	640,000pixels/m ²	289,444,000pixels/m ²	160,000pixels/m ²
Display size	customizable	customizable	customizable
Cabinet size	customizable	customizable	customizable
Refresh rate	3840Hz	3840Hz	3840Hz
Driver method	1/64S	1/43S	1/32S
Brightness	600nits	800nits	1000nits
Viewing angle	160/160	160/160	160/160
Max. power	500W/m ²	550W/m ²	550W/m ²
Avg. power	150w/m ²	165w/m ²	165w/m ²
Protection rate	IP31	IP31	IP31
Service type	front	front	front





Transparent Screens

LUCID series

Features:

- Clear and crystal, high transparency
- Slim and light weight
- Noise free
- Wide applications for event productions & commercial installation



LUCID Series

Technical Parameter

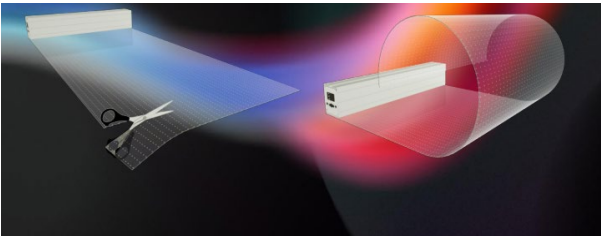
	L2	L3-Pro	L3
Model	SMD1921	SMD1921	SMD2020
SMD	2.8-5.6mm	3.9-7.8mm	3.9-7.8mm
Pixel Pitch	500 x 125mm	500 x 125mm	500 x 125mm
Module size	63,368pixels/m ²	32,768pixels/m ²	32,768pixels/m ²
Pixel Density	customizable	customizable	customizable
Display size	1000X500mm	1000X500mm	1000X500mm
Cabinet size	1920Hz	1920Hz	1920Hz
Refresh rate	16S	8S	16S
Driver method	4000nits	4200nits	800nits
Brightness	140/140	140/140	140/140
Viewing angle	650W/m ²	650W/m ²	400W/m ²
Max. power	180w/m ²	180W/m ²	120W/m ²
Avg. power	IP31	IP31	IP31
Protection rate	Front Service	Front Service	Front Service
Service type			



FILM series

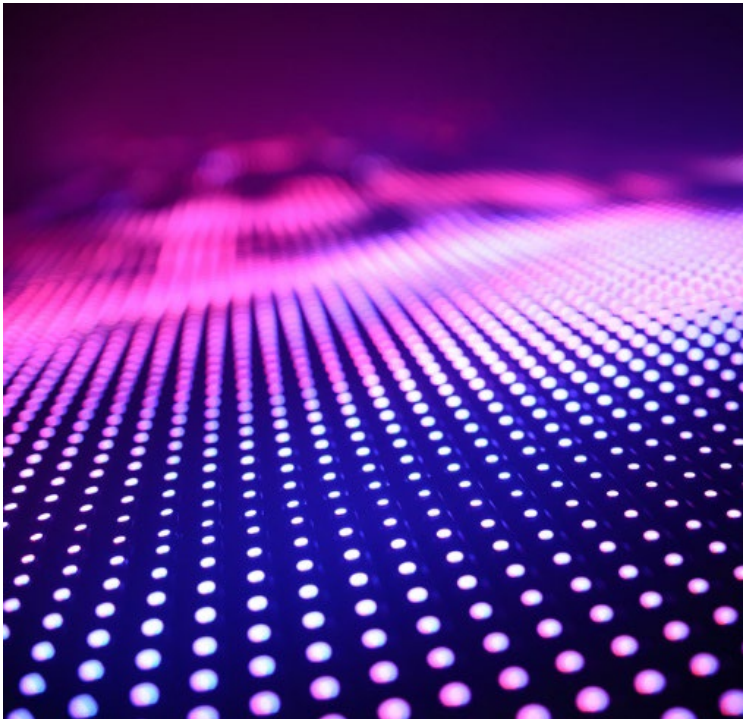
Features:

- Flexible, transparent design
- Slim and light weight to 2mm and 3kgs/ m²
- Cuttable design
- Installation structure free, stick to glass directly



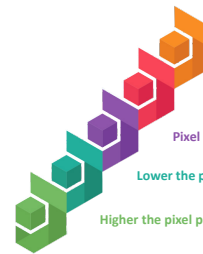
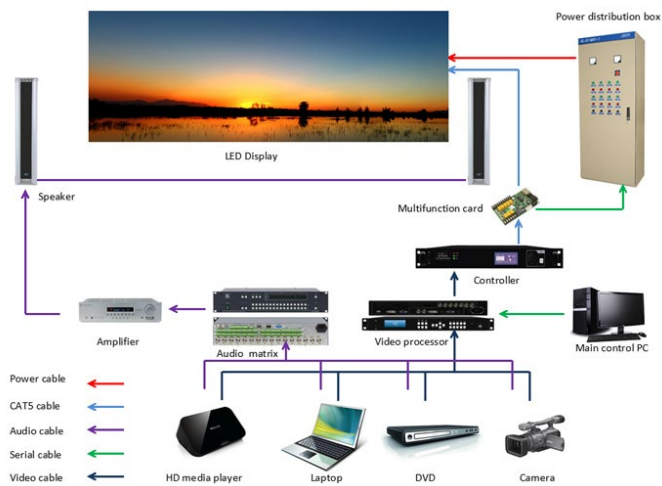
FILM Series

Technical Parameter			
Model	FTS6	FTS8	FTS10
SMD	SMD2020	SMD2020	SMD2020
Pixel Pitch	6mm	8mm	10mm
Module size	816*384mm	400*1000mm	400 x 1000mm
Pixel Density	27,777pixels/m ²	15,625pixels/m ²	10,000pixels/m ²
Display size	customizable	customizable	customizable
Refresh rate	3840Hz	3840Hz	3840Hz
Transparency	88%	90%	95%
Brightness	4800nits	4000nits	4000nits
Viewing angle	160/160	160/160	160/160
Max. power	400W/m ²	800W/m ²	800W/m ²
Avg. power	150w/m ²	240w/m ²	240w/m ²
Protection rate	IP55	IP55	IP55
Service type	Rear Service	Rear Service	Rear Service



Display knowledge & Accessories

System topology



Pixels are the smallest units on LED screen

Each pixel is made up of 3 color chips, the red, green and blue

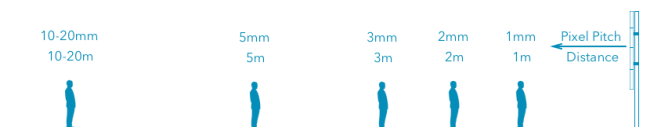
Pixel pitch refers to the distance between two pixels on a LED screen

Lower the pixel pitch, higher the resolution

Higher the pixel pitch, lower the resolution

53/54

Recommended Minimum Viewing Distances LED Pixel Pitch vs. Distance



Display Accessories

